

Han D 40 Pos. F Insert Term. Block Left

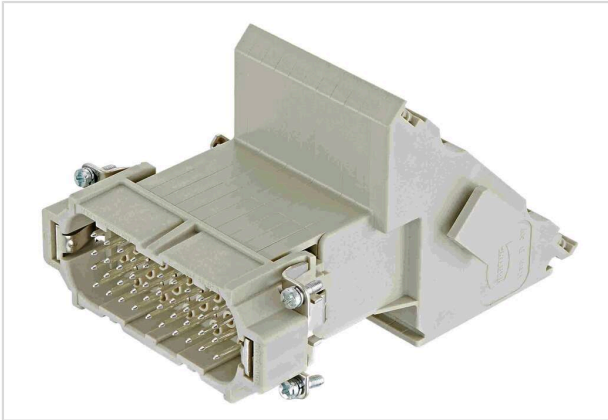


Image is for illustration purposes only. Please refer to product description.

Part number	09 21 040 4702
Specification	Han D 40 Pos. F Insert Term. Block Left
HARTING eCatalogue	https://b2b.harting.com/09210404702

Identification

Category	Inserts
Series	Han D [®] AV
Element	Terminal block connector
Specification	Left hand version Single contour (SK)

Version

Termination method	Screw termination
Gender	Female
Size	16 B
Number of contacts	40
PE contact	Yes

Technical characteristics

Conductor cross-section	0.2 ... 2.5 mm ²
Rated current	10 A
Rated voltage	250 V
Rated impulse voltage	4 kV
Pollution degree	3
Rated voltage acc. to UL	600 V
Insulation resistance	>10 ¹⁰ Ω
Contact resistance	≤4 mΩ
Tightening torque	0.5 Nm



Pushing Performance
Since 1945

Technical characteristics

Limiting temperature	-40 ... +125 °C
Mating cycles	≥500

Material properties

Material (insert)	Polycarbonate (PC)
Colour (insert)	RAL 7032 (pebble grey)
Material (contacts)	Copper alloy
Surface (contacts)	Silver plated
Material flammability class acc. to UL 94	V-0
RoHS	compliant
ELV status	compliant
China RoHS	e
REACH Annex XVII substances	Not contained
REACH ANNEX XIV substances	Not contained
REACH SVHC substances	Not contained
California Proposition 65 substances	Yes
California Proposition 65 substances	Lead Nickel
Fire protection on railway vehicles	EN 45545-2 (2020-08)
Requirement set with Hazard Levels	R22 (HL 1-3) R23 (HL 1-3)

Specifications and approvals

Specifications	IEC 60664-1 IEC 61984
Approvals	DNV GL
UL / CSA	UL 1977 ECBT2.E235076

Commercial data

Packaging size	1
Net weight	405 g
Country of origin	Romania
European customs tariff number	85366990
GTIN	5713140040694



Pushing Performance
Since 1945

Commercial data

eCl@ss

27440205 Contact insert for industrial connectors
